

Invest in Diabetes Excellence

Do you find yourself wondering where to start in a new diabetes role? Would your program like to improve your patient/client outcomes?

Discover a world of difference in diabetes care.

Diabetes Training 101 Inc. can help by:

- Offering **learning opportunities** at all levels in your organization including professional staff, health managers, para-professionals, and community based staff.
- Jumpstarting your diabetes program with **world-class education materials** based on the Clinical Practice Guidelines for the Prevention and Management of Diabetes in Canada.
- Leading your organization to **help your clients discover their best diabetes** management through the Discovering Diabetes™ Model of Care, our evidence-based, self-care diabetes education program.

Our Discovering Diabetes™ Program and myth books are used in programs all over Canada.

2015

Diabetes Training 101 Inc.

From a Long and Productive Partnership.....

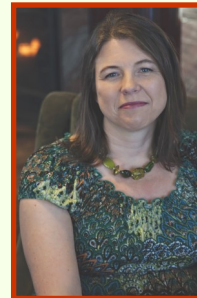
Kris Swenson, RN, CDE and Betty Brackenridge, MS, RD, CDE started these programs over 20 years ago and have seen the benefits of making diabetes control and an enjoyable life a package deal for their clients.



.....to a New Beginning.



Michelle Archer, RD is a diabetes educator who has served people with diabetes for more than 15 years. When not working with people living with diabetes, she can be found training others across Canada on how to



Make a Difference in Diabetes!

For more information about our programs and services, call or visit our website at:

www.diabetestraining.ca

Diabetes Training 101 Inc.

Regina, Saskatchewan, Canada

Email: diabetestraining@sasktel.net

Phone: 306-501-9355

DIABETES Training 101

**TRAINING AND PROGRAMS TO
HELP YOU MAKE A
DIFFERENCE IN DIABETES**



**Experience the Power of
Patient-Centered,
Outcomes-Focused Diabetes
Care and Education**

Professional Training Programs

FOR ALL HEALTH CARE PROVIDERS

Diabetes Manager University[®]

The 3-day DMU is a master course in patient-centered diabetes care, using today's best therapies. Includes:

- Clinical and behavioral care.
- Selection and titration of current medication choices.
- Nutrition approaches that patients actually USE.
- Program design and delivery for a changing environment.

Diabetes Today: Managing Diabetes in the Real World[®]

A one day update of the latest in diabetes care and management. You'll be inspired by all that's new in the ever changing area of diabetes.

Call or visit

www.diabetestraining.ca

for more information on our training programs.

Diabetes Myth Books[®]

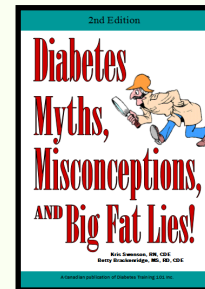
FOR PEOPLE LIVING WITH DIABETES

Each version is an easy read, coil bound book written for people living with diabetes.

Both versions have over 100 pages of current diabetes information and are aligned with the latest Canadian Diabetes Association Clinical Practice Guidelines. Our myth book helps dispel diabetes myths with accurate and helpful diabetes diagnosis, management and care information.

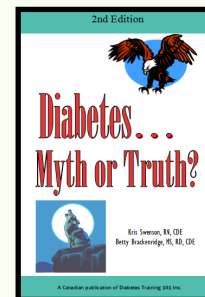
General Audience Version

Diabetes Myths, Misconceptions and Big Fat Lies!



For First Nations/ Aboriginal People

Diabetes...Myth or Truth?



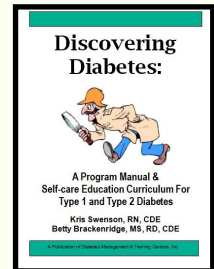
Whether on it's own or as a diabetes program companion, our myth books are a great resource for people living with diabetes.

Discovering Diabetes[®]

A COMPLETE PROGRAM FOR PATIENT CARE

You can deliver diabetes education program that is

- Patient-centered
- Behaviorally directed
- Clinically effective
- Financially viable
- And consistent with CDA Guidelines.



FULLY DEVELOPED PROGRAM OUTCOMES ARE EVIDENCE BASED

PROGRAM COMPONENTS

Program Manual

Contains the Discovering Diabetes[™] Program Manual, background references, point of care forms and outcome tracking tools used in this program designed to improve diabetes outcomes. Audiovisual materials can be presented to both groups and individuals in our flexible format.

Diabetes Myth Books

Easy to read book that challenges the myths and misconceptions that are common barriers for people to Live Well with Diabetes.

Point of Care Forms

Intake, assessment, charting, and follow up forms are included in the program along with helpful teaching tools.

Program Training

Training in the current understanding of diabetes medicines and management, effective use of the teaching materials, forms, communication and outcome-tracking tools to help your program succeed.